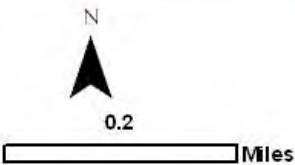
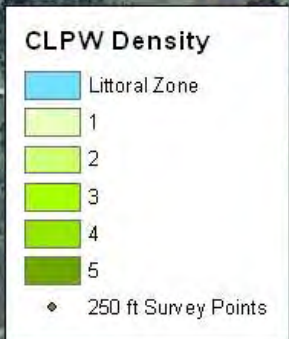
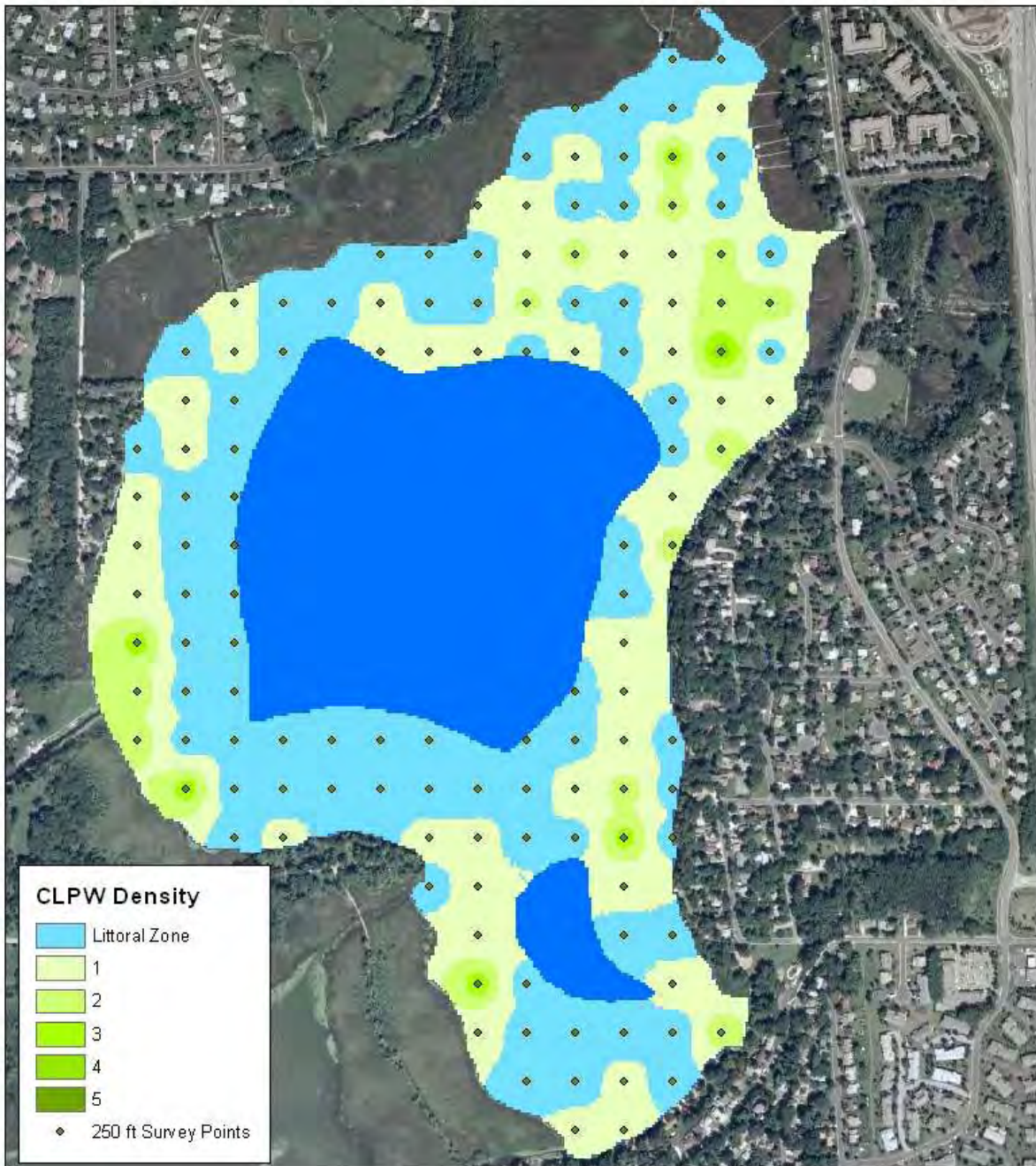


Eagle Lake Point-Intercept Surveys for 2012

Conducted by Three Rivers Park District

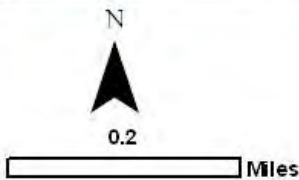
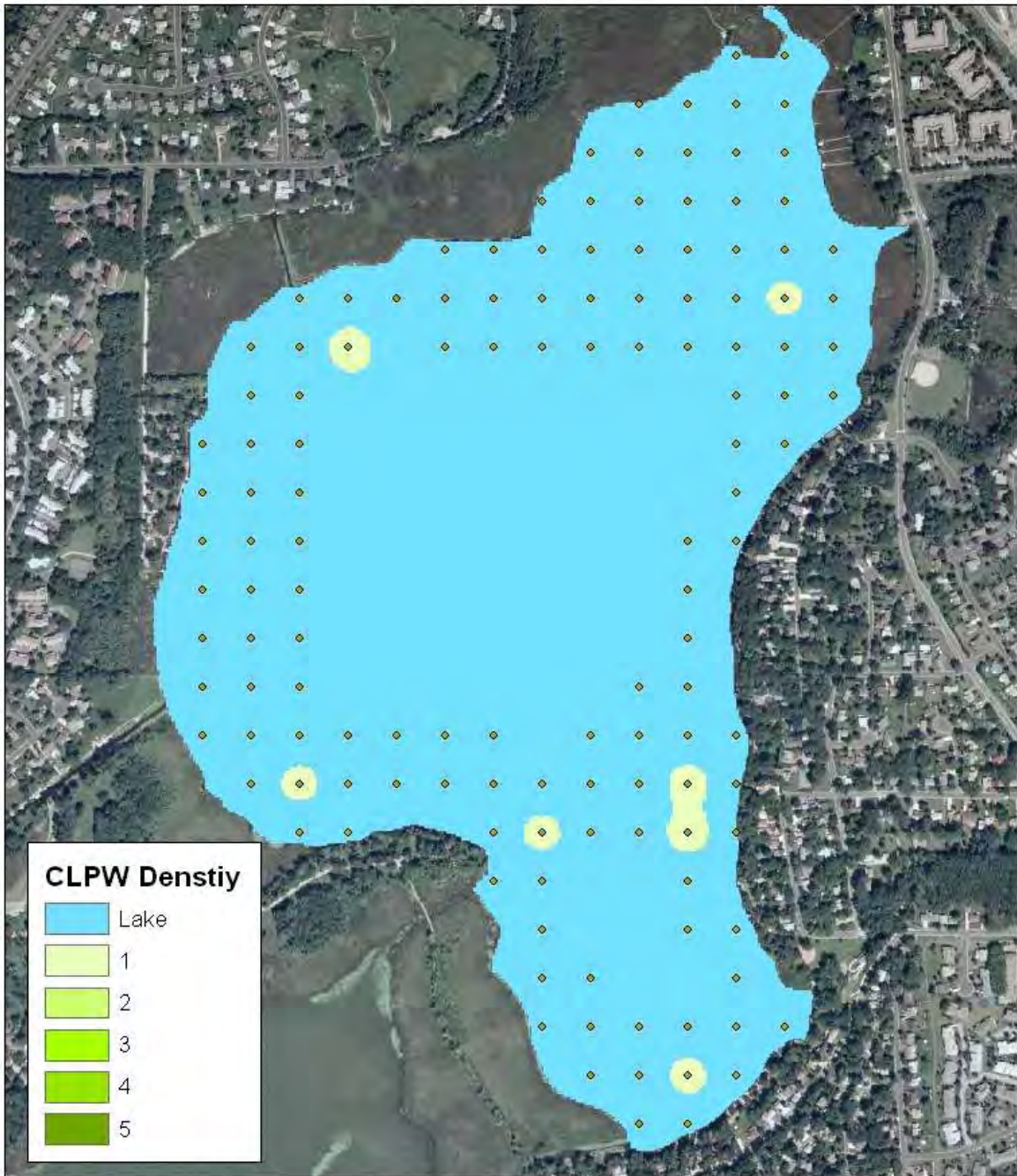
Contact: Brian Vlach (BVLach@threeriversparkdistrict.org)(763.694.7846)



Eagle Lake
Curly Leaf Pondweed
6-15-2012



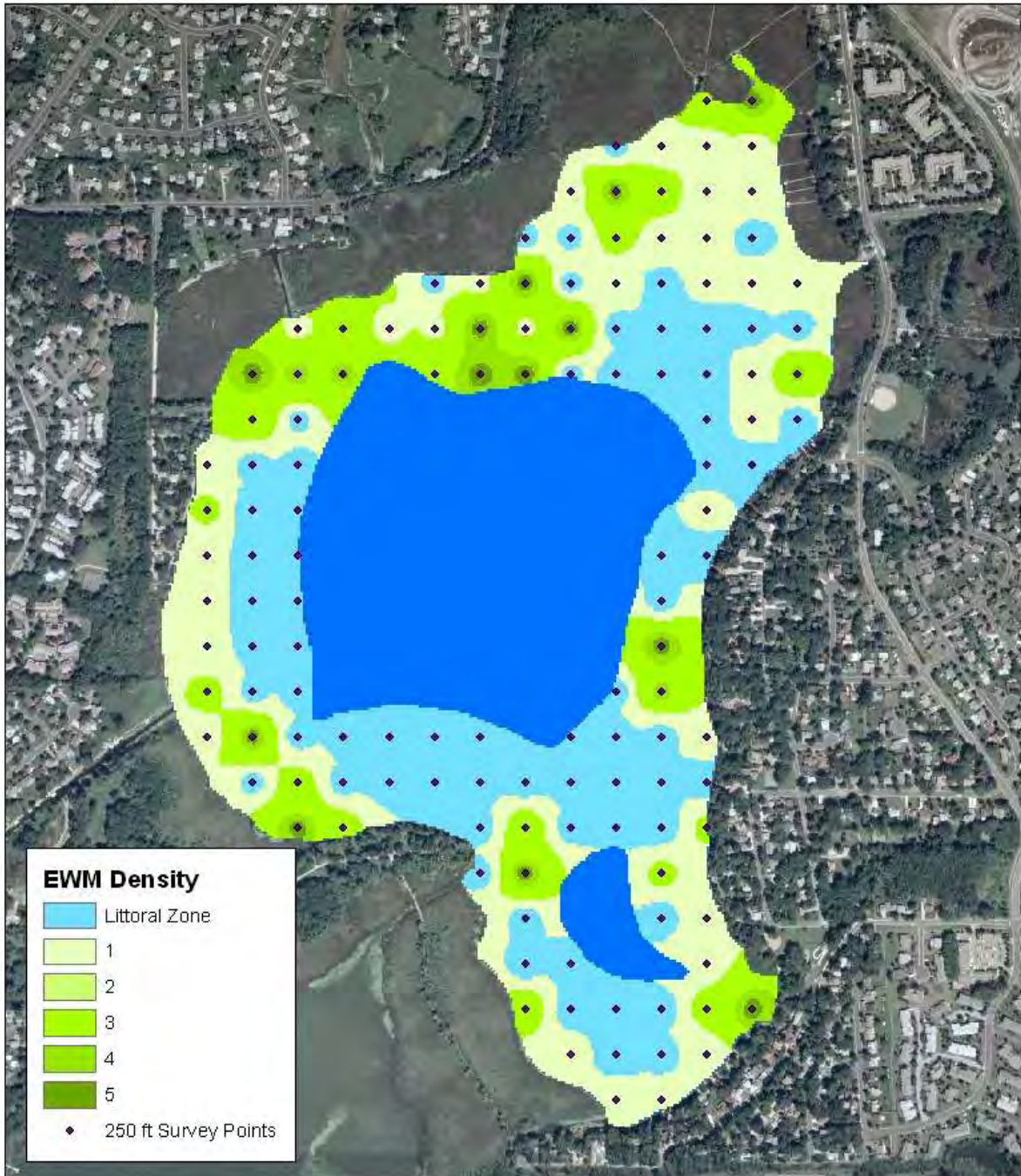
This map is a compilation of data from various sources and is provided "as is" without warranty of any representability of accuracy, timeliness, or completeness. The user acknowledges and accepts the limitations of the data, including the fact that the data is dynamic and in a constant state of maintenance, correction, and update.



Eagle Lake
Curly Leaf Pondweed
9-19-2012



This map is a compilation of data from various sources and is provided "as is" without warranty of any representation of accuracy, timeliness, or completeness. The user acknowledges and accepts the limitations of the data, including the fact that the data is dynamic and is in a constant state of maintenance, correction, and update.



EWM Density

- Littoral Zone
- 1
- 2
- 3
- 4
- 5

◆ 250 ft Survey Points



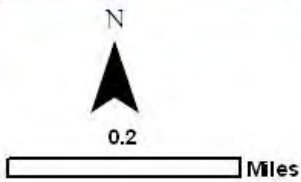
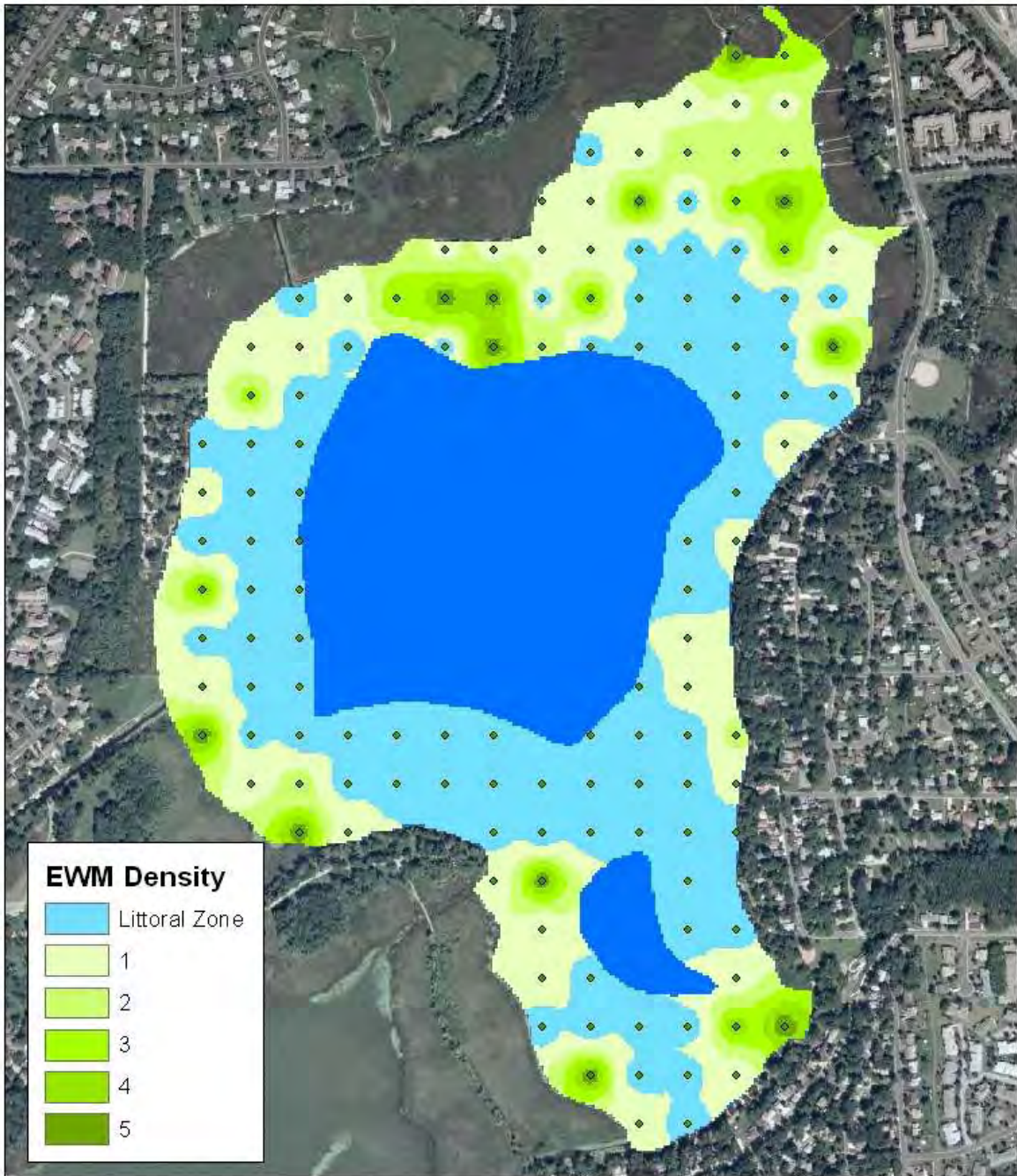
0.2

_____ Miles

Eagle Lake
Eurasian Water Milfoil
6-15-2012



This map is a compilation of data from various sources and is provided "as is" without warranty of any representation of accuracy, timeliness, or completeness. The user acknowledges and accepts the limitations of the data, including the fact that the data is dynamic and in a constant state of change. Accuracy cannot be guaranteed.



Eagle Lake
Eurasian Water Milfoil
 9-19-2012



This map is a compilation of data from various sources and is provided "as is" without warranty of any representation of accuracy, timeliness, or completeness. The user acknowledges and accepts the limitations of the data, including the fact that the data is dynamic and is in a constant state of maintenance, correction, and update.