



# Eagle Lake

## 2011 Eagle Lake Preservation Association Annual Meeting

May 10<sup>th</sup>, 2011

# Eagle Lake

## AGENDA

- Opening & Introductions
- Why we're here
- Budget
- Lake Quality & Maple Grove Lake Quality Commission
- Social Events
- Website Preview
- Election Nominations
- Committee Sign-ups
- Announcements

## Introductions

- President – Margaret Hamm
- Vice President – Travis Theiss
- Secretary – Carrie Plack
- Treasurer – Travis Theiss
- Board Member – Larry McGough
- Board Member – John Garritsen
- Board Member – Jennifer Tieva
- Board Member – Phil Ainsworth
- Water Quality Committee Lead – Karen Karbo

# Eagle Lake

## Why We're Here

- Advance and protect interest of Eagle Lake Community
- Community Education
- Evaluate, monitor and protect water quality
- Maintain delicate ecological balance
- Fish & wildlife management
- Partner with City of MG & Three Rivers Park District to improve lake water quality

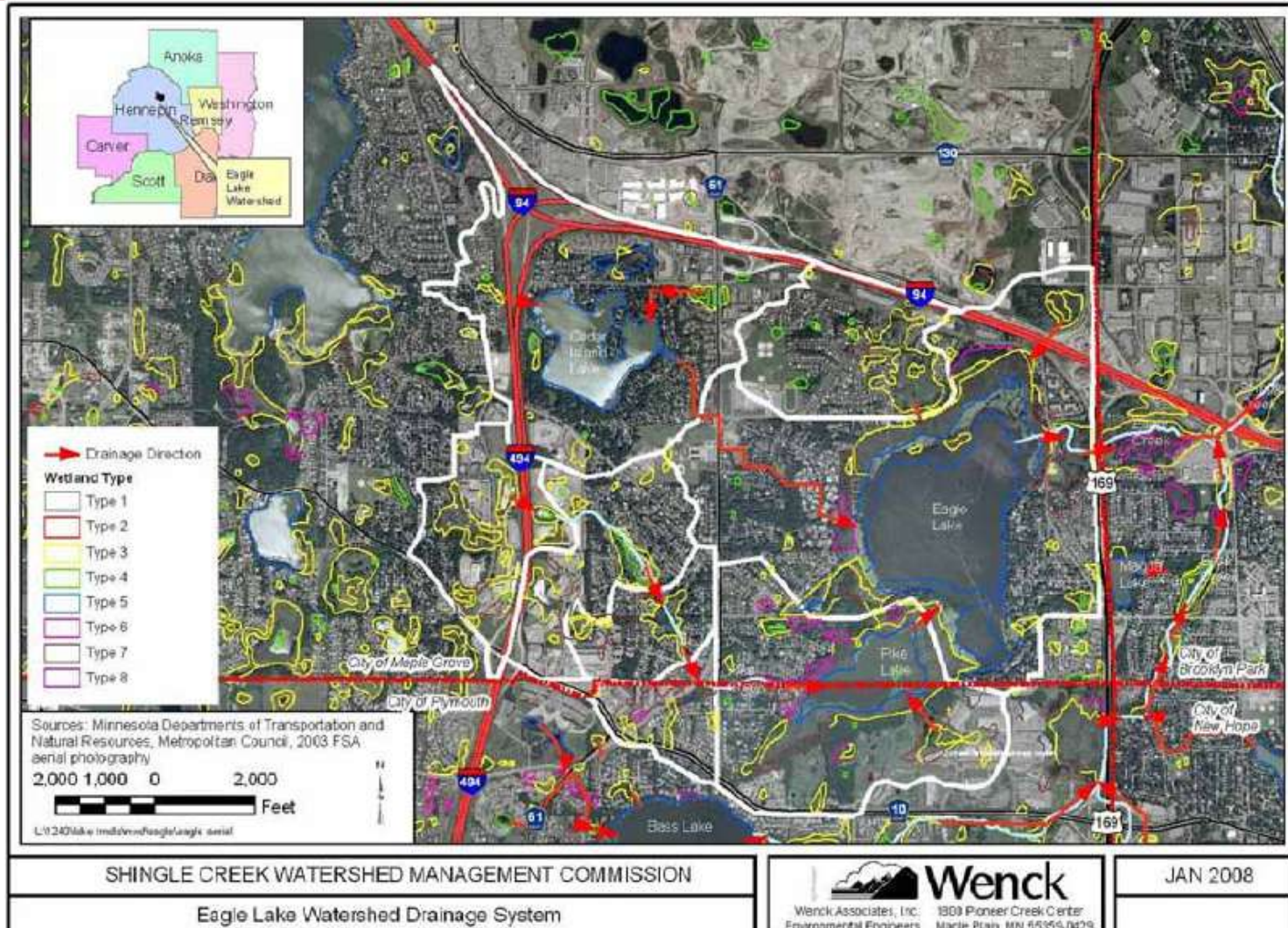
# Eagle Lake

## Why We're Here

- City is looking to lake associations for suggestions, funds, and resources to help improve their lakes
- Cedar Island is more active and members put in more \$\$\$ (\$100 - \$150 per homeowner)
- City is looking to put in monitoring devices for understanding water quality of flow from Cedar Lake into Pike/Eagle Lakes

# Eagle Lake

## Why We're Here





James Johnson, owner of Maple Grove-based Freshwater Scientific Services LLC, keeps a close eye on Weaver Lake.

## Weeding Out Problems

A local conservation group helps preserve Weaver Lake's quality of life.

TEN YEARS AGO, when Jack Germanson and his family moved into a home on the northeast side of Weaver Lake, the lake didn't live up to the "sky-blue waters" ideal Minnesotans have cherished for generations. Each summer, the lake became murky after being choked with spring weeds.

An invasive plant species, curly-leaf pond weed, would grow throughout the winter and out-compete the native plants. "By about Memorial Day each year, we'd have a blanket of weeds so thick you could just about walk on the water," Germanson recalls. "Then it would die off in mid- to late June and, because of the nutrients and [residue] left behind, we would have horrendous algae blooms."

In spring 2001, Germanson and his wife Nancy decided to join the Weaver Lake Conservation Association (WLCA), a homeowners' group dedicated to the lake's effort. Today, Weaver Lake is one of the clearest lakes in Maple Grove, with water clarity in the

range of 10 to 18 feet.

The transformation didn't happen by accident; it took several years, some trial and error, some scientific input and dedicated effort by a group of lake stewards—the WLCA members.

For a number of years, association members (about 80 percent of the approximately 100 Weaver Lake watershed homeowners) each paid \$200 per year to have the weeds cut and removed—about 100 harvestor-loads per year (approximately 1 ton).

"That helped, but it didn't seem that we were making a lot of progress, and we were spending 20 grand a year," says Germanson, now WLCA vice president. To find a solution, they enlisted the help of aquatic ecologist James Johnson, owner of Maple Grove-based Freshwater Scientific Services LLC. Based on Johnson's recommendation, the group started treating experimental test-plots in 2004, treating the entire lake for five straight summers. It seems to have worked.

# June 2010 Maple Grove Magazine

## WLCA Events

As a part of its mission, the WLCA also hosts annual community events that mix socializing and education, such as the Take Your Kids Fishing event every July in conjunction with Maple Grove Days at Weaver Lake Park, which draws about 50 participants. Coming up this month, the WLCA hosts a Free Music in the Park event from 6 to 9 p.m. June 18 at Weaver Lake Park. Music starts at 7 p.m.; a potluck begins at 6:30 p.m. For more information on these events or about the WLCA, visit [weaverlake.org](http://weaverlake.org).

The group now uses a herbicide called endothal, which only requires a couple of days contact time and is more effective at controlling the weed while also not knocking out native plants, like coon tail and elodna (sometimes called pond weed).

Johnson says the treatment has inhibited reproduction by the undesirable plants, although there are still some seed-like structures remaining in the lake sediment. "But each year it has been spreading less and less," he says. "After five years, we have concluded that you don't eradicate curly-leaf weed ... you still have to maintain the same level of pressure to keep it at bay. We're not going to treat the whole lake again; we're moving into a control phase."

Johnson credits the lake association for the successful control effort. "They are a great group, incredibly effective. They have found a really good balance between a focus on lake management and social activities," Johnson says, noting that the association formed a 501(c)(3) nonprofit corporation several years ago to qualify for state weed control funding.

The WLCA's mission extends beyond the 149-acre lake itself, to protecting the adjacent marshlands and parks. The group is seeking more membership from residents who live within the lake's watershed area. There are just fewer than 100 homes on the lake, but more than 700 homes within the surrounding watershed area, according to Germanann.

The lake's future now seems to be in good hands, but it will always need protectors. //

Enjoy our newly remodeled patio!




- Water feature
- Fire pit
- Kids play ground
- Trellised seating areas
- Volleyball
- Horseshoes
- And much more!!!

Celebrating 50 Years

**THE LOOKOUT**  
High Line, MN  
BAR & GRILL

Check out our NEW menu!  
Live music every Thurs-Sat

763.424.4365 • [www.lookoutbarandgrill.com](http://www.lookoutbarandgrill.com)

2011 Seniors



YOU CHOOSE

20% OR OFF ANY \$50 PACKAGE THRU 7/31/10

CLIX portrait studios

Maple Grove - 763-657-0239  
[getyourclixon.com](http://getyourclixon.com) or [clixmn.com](http://clixmn.com)



# Eagle Lake

## Budget

- Current balance: \$3310.84
- 2010 Dues contribution: \$555
- 2011 Current Dues Contribution: \$330

# Eagle Lake

## Budget

- Where your dues go
  - 501.3c application - \$500
    - Tax deductible dues!
    - Can start to apply for government grants
  - Mailings/announcements
  - Optional projects
    - Fish survey - \$2700 quote, applied for \$2200 city grant
    - Iron Filings to treat entire lake (transportation costs)
    - Community discount of weed treatment?

# Eagle Lake

## Lake Quality & MG Lake Quality Commission

- MG Lake Quality Commission recent activities
- Recap of \$\$ spent on lakes in Maple Grove

# Eagle Lake

## Social Events

- Family night on Eagle Lake – Mondays!
- Fourth of July boat parade again this year?
- Fall festival for Eagle Lake at the Thoresen Park?
- Any other ideas

# Eagle Lake

## Website Preview

Eagle-Lake.org

### Announcements

#### ▼ Eagle Lake Preservation Association

- Articles of Incorporation
- Bylaws
- ELPA Officers
- Web Content

#### ▼ Committees

- Water Quality Committee
- Education Committee
- Communications Committee
- Social Committee

#### Calendar

#### ▼ ELPA Public Files

- ELPA Photos
- Meeting Minutes

#### Links

#### Sitemap

[Edit sidebar](#)

## Eagle Lake Preservation Association

Eagle Lake is a metropolitan lake located in Maple Grove, MN. Just to our south, Pike Lake, is joined to Eagle Lake via stream and wetland area.



This is a site dedicated to the support and long-term well being of the lake and its surrounding community

## Website Preview

Eagle-Lake.org

Search this site

### Announcements

#### ▼ Eagle Lake Preservation Association

Articles of Incorporation  
Bylaws  
ELPA Officers  
Web Content

#### ▼ Committees

##### Water Quality Committee

Education Committee  
Communications Committee  
Social Committee

### Calendar

#### ▼ ELPA Public Files

ELPA Photos  
Meeting Minutes

### Links

### Sitemap

[Edit sidebar](#)

[Committees >](#)

## Water Quality Committee

### Mission

To be reviewed: Research, promote, and advise ELPA Board on water quality improvement techniques and initiatives.

### Goals

- Influence decisions on efforts to improve Eagle Lake watershed water quality
- Work with other agencies to promote and carry out Eagle Lake water quality initiatives

### Members

Karen Karbo  
Mike Barnhiser  
Jim Wrobel

### General Information

#### Chlorophyll a

Photosynthetic pigment found in all green plants, and the main pigment in algae. The concentration of chlorophyll a is used to estimate the amount of algae (all phytoplankton in a given area) in surface water. Measured in micrograms per liter ( $\mu\text{g/L}$ ).

While it is normal to find algae in streams and lakes, high levels of algae can lead to low levels of dissolved oxygen in a water body.

*Consider Chlorophyll as a measure of the quantity of algae in the lake.*

[2002 Chlorophyll historical measurements](#)

#### Total Phosphorus (TP)

A nutrient essential to the growth of organisms, and is commonly the limiting factor in the primary productivity of surface water bodies. Total phosphorus includes the amount of phosphorus in solution (reactive) and in particle form. Agricultural drainage, wastewater, and certain industrial discharges are typical sources of phosphorus, and can contribute to the eutrophication of surface water bodies. Measured in milligrams per liter (mg/L). See Phosphate.

*Consider Phosphorus as a measure of the quantity of food available for the algae in the lake.*

[2002 Phosphorous historical measurements](#)

#### Secchi Disk

A device measuring the depth of light penetration in water.

*Consider the Secchi depth as a measure of the clarity of the lake.*

# Eagle Lake

## General Discussion

Eagle-Lake.org

Search this site

### Announcements

#### ▼ Eagle Lake

- Preservation Association
- Articles of Incorporation
- Bylaws
- ELPA Officers
- Web Content

#### ▼ Committees

- Water Quality Committee
- Education Committee
- Communications Committee
- Social Committee

### Calendar

#### ▼ ELPA Public Files

- ELPA Photos
- Meeting Minutes

### Links

#### Sitemap

[Edit sidebar](#)

## Links

### State/Federal Agencies

[City of Maple Grove Lake Quality Commission \(MGLQC\)](#)

[Other Maple Grove Lakes](#)

[Minnesota Department of Natural Resources](#)

[Lake Finder](#)

[Minnesota Pollution Control Agency \(MPCA\)](#)

[Minnesota Pollution Control Agency TMDL for Eagle Lake](#)

[Citizen Lake Monitoring Program \(CLMP\)](#)

[Shingle Creek Watershed Management Commission](#)

[Three Rivers Park District water management](#)

### Other Organizations

[Checkmylake.org](#)

[Lake Access](#)

['Lakescaping for Wildlife and Water Quality' book](#)

[Minnesota Shoreland Management](#)

[Minnesota Waters Organization](#)

[Mississippi Headwaters Board](#)

[U of WI Water Resources Education](#)

[West Metro Water Alliance \(WMWA\)](#)

# Eagle Lake

A horizontal banner image showing a sunset over a body of water. The sky is a gradient of orange and red, with the sun low on the horizon. The water in the foreground is dark and reflects the colors of the sky. The text 'Eagle Lake' is centered at the top in a white serif font.

## General Discussion

- Concerns
- Ideas



# Eagle Lake

## Formalities

- Election Nominations
- Committee sign-ups
  - Water Quality
  - Education
  - Communications
  - Social
- Announcement
  - Eagle Lake south & east side road to be redone next year
    - Fish Lake is this year (\$4000 is average assessment)