



# Eagle Lake News

A publication for homeowners on Eagle Lake and Pike Lake ~ Maple Grove, Minnesota

## Winter 2012-2013

### Inside this issue:

Recap ~ 2012 ELPA Accomplishments	1
Ahead~ 2013 ELPA Goals	1
Adopt A Storm Drain! Your Curb is Really the Shore of Eagle lake	2
Ice Clean-up Time!	2
The Importance of ELPA Membership	3
2013 Membership Form	3
Eagle Lake Neighborhood Watch Update and Next Door Eagle Lake	4

## Recap ~ 2012 ELPA Accomplishments

2012 was a very busy and successful year for the ELPA. Here are just a few of our accomplishments:

- Secured five grants for lake improvement projects
- Increased volunteer membership to 35% of lake homeowners
- Purchased boat launch educational sign - to be installed spring 2013.
- Developed Homeowners Guide project – completed guide to be distributed spring 2013 to all lake homeowners
- Initiated Adopt a Storm Drain program
- Presented to Shingle Creek Commission on ELPA initiatives
- Aquatic Plant survey completed
- Started Neighborhood Watch program (10 areas), Eagle Eyes Alerts and NextDoor Eagle Lake
- Organized social events such as the July 4th Boat Parade, 2nd Annual ELPA Fall Festival, National Night Out promotion, 1st Annual Ice Dunk and Eagle Lake Family night
- Distributed match grant to homeowners for improvement projects done on their property aimed at increasing water quality (\$1279)
- Provided educational

- session to homeowners from Fortin Consulting
- Filed for 501(c)3 Non-Profit status
- Distributed three ELPA Newsletters
- Extra fall street sweep
- ELPA webpage updated regularly
- Established closer ties with the City of Maple Grove
- Adopted Thoresen Park and stained the guard rail

**Thank you to the committee volunteers and board members for all of the hard work that made this progress possible!**

**We look forward to a productive 2013!**

## Ahead ~ 2013 ELPA Goals

The ELPA board has determined the following goals for 2013:

- Submit a minimum of three grant applications for water quality improvement
- Conduct two or more education initiatives
- Expand storm drain adoption project
- Continue promoting annual social events for homeowners
- Partner with Cedar Island Lake Association to align water quality improvement goals

If you are interested in getting involved with ELPA, we have a number of different committees, and are always looking for volunteers. Volunteering does not require a huge time commitment, yet is highly beneficial to our lake and environment. Our current committees are Water Quality, Education/Communication and Social.

More information is available on our webpage [www.eagle-lake.org](http://www.eagle-lake.org).

If interested, please contact Travis Theiss at [tntheiss@gmail.com](mailto:tntheiss@gmail.com)

**Watch for information on the Annual Meeting to be held in May 2013!**



**Everything that goes down the storm drain ends up in the lake!**

**We want to keep you informed... In order to provide you with the most current information about Eagle Lake we need to have your current contact information. Please send to Becky Fahrenbruch at [bjnowak1@gmail.com](mailto:bjnowak1@gmail.com)**

## **ADOPT A STORM DRAIN!**

### **Your Curb is Really the Shore of Eagle Lake**

Storm drains are designed to collect storm water and direct it to the underground sewer system. Eventually that same storm water, along with any pollutants picked up along the way is deposited into our waterways. **Everything that goes down the storm drain ends up in our lake!** Clean storm drains help reduce pollution by keeping our lakes free of trash, debris, animal waste, harmful chemicals and other pollutants.

According to the EPA (Environmental Protection Agency), more than 60% of water pollution comes from storm water runoff.

As homeowners, it is our responsibility to keep our boulevards free of yard waste and refuse. It is a violation of Maple Grove City Ordinance Solid Waste Management Article 1. Section 26.3 not to comply.

**You can help** reduce pollutants in our lake by volunteering to be a steward of the storm drains near your home. Please Adopt a Storm Drain!

Storm Drain Adoption is a great way to teach children responsible environmental stewardship. Make your adoption a family activity. Make this a neighborhood project. Doing a little can accomplish a lot!

Caring for your adopted storm drain only takes moments. Take charge of the storm drain/s near you. **ONLY** rainwater is allowed down the drains. Anything else can harm wildlife and impair water quality.

Remove and dispose of leaves and garbage **WEEKLY**, and after a heavy rain.

Keep the curb in front of your home clear of debris that could be washed down

toward the drains.

Shovel aside snow to make a pathway for melting snow to enter.

**DO NOT** remove the grate from the drain opening. Call Public Works to remove hazardous materials like syringes and Animal Control to remove dead animals.

**Educate your neighbors** to dispose of grass clippings, leaves, animal waste, oil, grease, paint, and car soap **BEFORE** they enter the street. Dumping toxic substances down storm drains is illegal!

**Adopting a storm drain is easy!**

Simply email your name and address to:

[ELPA@eagle-lake.org](mailto:ELPA@eagle-lake.org) to adopt the nearest available storm drain.

## **Ice Clean-up Time!**

Many of us have seen it while walking on and around Eagle and Pike Lakes during the winter time... small piles of garbage and waste, left over by guests of our lake that have forgotten to take their trash with them. As springtime arrives, that trash ends up on the bottom of our lake, or on your shoreline - certainly not

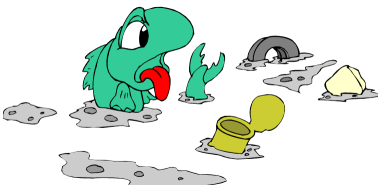
where it belongs!

Please join with other members of ELPA to help keep our ice clean. We will be meeting at Thoresen Park at 2pm on Sunday, February 24th and heading out on the ice from there.

Please bring gloves, a garbage bag or pail, and your enthusiasm for keeping our lake clean. With everyone

taking just a few minutes to canvas the lake ice and the surrounding areas, we can retrieve much of the trash that would otherwise end up in our lake. **THANK YOU!**

**Ice Clean-up**  
**Sunday, February 24th**  
**2:00 pm**  
**Thoresen Park**  
**6359 Eagle Lake Drive**



# The Importance of Association Membership

### Association Objectives:

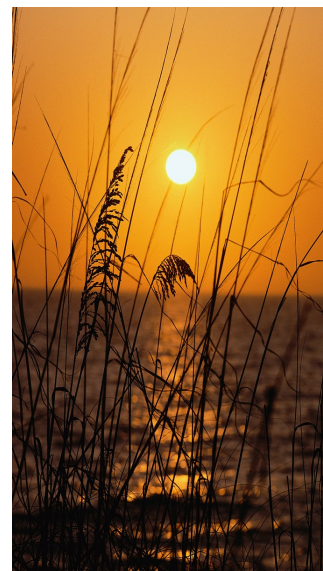
- Evaluate, monitor and protect water quality
- Advance and protect interests of the Eagle/Pike Lake Community
- Provide community education through in-services, newsletters, boat launch sign and the ELPA website
- Promote ecological balance
- Fish and wildlife management
- Foster a sense of community through social events
- Partner with the City of Maple Grove, Shingle Creek Watershed, Three Rivers Park District and other lake associations to improve lake water quality

### Membership Benefits:

- Protect property values
- Strong associations are better able to access vital project funding
- Public education through expert speakers, association annual meeting and ELPA website and quarterly newsletter
- Foster a sense of community
- Discussion forum
- Lake quality monitoring
- Partner with other lake associations

### ELPA Board of Directors:

- Travis Theiss** ~ ELPA President
- Jennifer Tieva** ~ ELPA Vice President
- Becky Fahrenbruch** ~ ELPA Secretary/Treasurer
- Karen Karbo** ~ ELPA Board Member
- Roger Hamm** ~ ELPA Board Member
- John Garritsen** ~ ELPA Board Member
- Bob & Sheri Lundstrom** ~ ELPA Board Members  
Pike Lake Representatives
- Larry Plack** ~ ELPA Board Member



The Eagle Lake Preservation Association is currently seeking volunteers. Please help in preserving our beautiful lake!

Thank you !  
Your dues and donations make a difference!



Please Join Today!

*The purpose of the Eagle Lake Preservation Association is to educate the community regarding the wise use, management, and preservation of Eagle Lake and its surrounding watershed in order to maintain the delicate ecological balance which must be kept between the Lake, the adjacent shore land, and its surrounding watershed and encourage such use, management and preservation.*

*Protect your investment; keeping our lake clean will help us to maintain our lakeshore property values while contributing to the entire community by offering aesthetic value and a convenient place for safe recreation*

## Membership Form

2013 Dues:

Lakeshore Homeowner	\$50.00
Friends of Eagle/Pike Lake	\$25.00

Please consider making a contribution by paying annual membership dues. These funds are vital to the preservation efforts of Eagle Lake! Thank you!

Name \_\_\_\_\_

Address \_\_\_\_\_

E-mail \_\_\_\_\_

Phone \_\_\_\_\_

Please Make Checks Payable to:  
Eagle Lake Preservation Association

Send payments to:  
6435 Eagle Lake Drive  
Maple Grove, MN 55369

Questions?  
Phone: 763-442-7918  
Website: <http://eagle-lake.org>

**Additional donations are accepted at any time and greatly appreciated!**

*All proceeds go directly toward Eagle Lake preservation efforts*



6435 Eagle Lake Drive  
Maple Grove, MN 55369

**Find us on the internet:**  
<http://eagle-lake.org/>



## Eagle Lake Neighborhood Watch Update and NextDoor Eagle Lake



Last fall we started the Eagle Lake Neighborhood Watch program following a string of nine home burglaries along the east and south east side of the lake. The suspect that has been charged in several of those burglaries is still awaiting trial.

He has a court hearing on June 3<sup>rd</sup> where he is expected to ask for a jury trial. As a result of his criminal activities in our neighborhood we now have ten watch groups that cover an area extending from the South end of Eagle Lake, along the entire East side and a portion of the north end. Our Watch group has now expanded and also covers the area south of 63<sup>rd</sup> Avenue and the homes east of the lake to Magda Drive.

The reason we have ten different groups is to meet the Maple Grove Police Department's standard requirements for neighborhood watch groups. The police department prefers smaller groups, so accordingly the area has been divided into our ten current groups. Each group is required to have two co-captains, and meet two times per year. We are currently in the process

of planning our 2013 meeting dates, and will announce them as soon as possible.

Neighborhood Watch signs have now been posted in the areas of groups 1, 2, 3 and 4. Signs will not be placed in the other group areas until those groups have met the requirements by establishing designated co-captains.

**We are always in need of co-captains to help out. If interested, please contact Larry Plack at the email address below.**

Since our last neighborhood watch meeting, we have been transitioning to a new format called "NEXTDOOR EAGLE LAKE". If your address is located in one of the areas described above, you can join on our website at [www.eaglelake.nextdoor.com/join](http://www.eaglelake.nextdoor.com/join). Ideally, we would like to have everyone in our watch group convert to this site to receive important information and alerts. The "Alert" feature is simple to use and does not require a third person to activate. The Alert process is simple; call 911 and report an incident in progress, or the sighting of a suspicious person. Next go to [www.eaglelake.nextdoor.com](http://www.eaglelake.nextdoor.com), click on the Crime/Safety Button, share a description of the incident and any suspects in the text box, and then hit send alert. Make

sure to give the suspect's description including height, weight, hair color, clothing color, car make, model and color and last known direction.

There are several other nice features in NextDoor Eagle Lake including a neighborhood map, a Recommendations section, a Buy/Sell/Free section and a Groups section, where you can start either a public or private group. Check it out and sign up!

"Eagle Eyes Alert" is our original text messaging alert system sent to all members whose cell phones receive text messages. If you have not yet signed up for the NextDoor Eagle Lake system, and are still using our original system, please contact Larry Plack at 763-498-2824 with any alerts, and an Eagle Eyes Alert will then be texted to the members of the Eagle Lake Neighborhood Watch. Within a few seconds, we can have almost everyone notified, and on the lookout for the suspect.

If anyone has an interest in starting a Watch Group on the West side of the lake, or if you have any questions/ideas, please contact Larry Plack at 763-498-2824 or [lsplack@gmail.com](mailto:lsplack@gmail.com).